

# Concrete Applications



## Next generation insulation powered by graphite®.


Foam-Control MAX® is a next generation insulation product with a maximum R-value powered by graphite. Foam-Control MAX is a premium grade insulation manufactured to provide architects, specifiers, distributors, and contractors all the features and benefits inherent in a high quality insulation.

- High R-value that never changes and is stable over time
- Range of compressive strength of 10, 15, or 25 psi
- Closed cell insulation with superior moisture resistance
- High drying potential to rapidly release absorbed moisture
- Excellent adhesion to concrete

## Powered by Graphite®.

Foam-Control MAX is comprised of many small pockets of air within a polymer matrix containing graphite. The graphite reflects radiant heat energy like a mirror, increasing the material's resistance to heat flow or R-value.

## Strength/R-value.

	R-value <sup>1</sup>		Compressive Strength <sup>2</sup> , psi
	75°F	40°F	
<b>100</b>	5.0	5.2	10
<b>150</b>	5.0	5.2	15
<b>250</b>	5.0	5.3	25

<sup>1</sup> R-value units are °F-ft<sup>2</sup>-h/Btu and are based on 1-1/8" thickness.

<sup>2</sup> Compressive strength @ 10% deformation.

Foam-Control MAX is available in a wide range of standard R-values and thicknesses to meet your needs.

### R-5, R-7.5, R-10, R-15, R-20

Product thicknesses for standard boards are provided in the Foam-Control MAX Thickness & R-value.

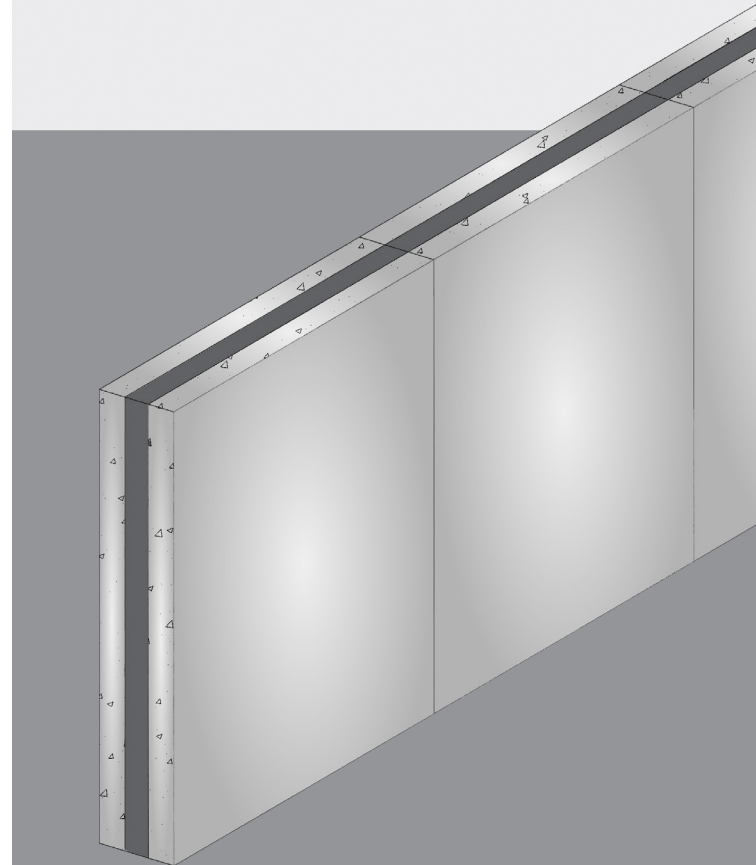
## Proven to meet, or exceed, building codes.

Foam-Control MAX is manufactured under an industry leading quality control program monitored by UL and further recognized in UL Evaluation Report UL ER11812-05. Foam-Control MAX meets ASTM C578, "Standard Specification for Rigid, Cellular Polystyrene Thermal Insulation".



## Sizes and Options.

Foam-Control MAX can be made in large or small, thick or thin sections. It can be custom cut in sizes ranging from a few square inches up to 3' x 4' x 16'. Patterns for custom projects are easily produced on computer aided cutting equipment.



## FOAM FACTS:

### Foam-Control MAX outperforms XPS.

- Foam-Control MAX powered by graphite provides a stable long-term high R-value at a lower cost
- Foam-Control MAX uses a blowing agent with 10 x lower global warming potential and 10,000 x lower ozone depletion
- Foam-Control MAX meets strength requirements at a lower cost
- Foam-Control MAX and XPS have resistance to moisture, but Foam-Control MAX has a higher vapor permeance leading to superior drying potential
- Foam-Control MAX with **©Perform Guard**<sup>®</sup> treatment available to provide termite resistance

## Performance Value.

When you consider all performance characteristics and cost, Foam-Control MAX Powered by Graphite is your best choice for high R-value next generation insulation.

Foam-Control MAX has air in its closed cells and therefore has a stable R-value. Many other insulations use blowing agents that cause R-value loss and are harmful to the environment.

Foam-Control MAX has compressive strength to meet specific project requirements.

Foam-Control MAX is manufactured to resist moisture absorption in wetting conditions and release absorbed moisture quickly during drying periods, which means Foam-Control MAX maintains R-value.

## Termite Resistant - Perform Guard®.

One of the most destructive forces anywhere is termites. Foam-Control MAX can be manufactured with Perform Guard, a proven and safe additive, that effectively resists termites.

Foam-Control MAX with Perform Guard meets ICC ES AC239, "Acceptance Criteria for Termite-Resistant Foam Plastics".

## Recyclable.

After it's life as a building insulation, Foam-Control MAX is 100% recyclable. It can be ground into granules and reincorporated into new Foam-Control MAX products or it can be thermally processed into a resin that's used to manufacture other new products.

## Ready to take control? Start here.

If you're ready to have Foam-Control MAX contribute to your next project, just contact your nearest Foam-Control MAX manufacturer and Technical Sales Representative. They will be happy to give you design consultation, information about Foam-Control MAX products, pricing, and answers to all of your questions.



**BIG SKY INSULATIONS, INC**  
15 Arden Drive | P.O. Box 838  
Belgrade, MT 59714

**Email: [answers@bigskyrcontrol.com](mailto:answers@bigskyrcontrol.com)**  
**Website: [www.bigskyfoamcontrol.com](http://www.bigskyfoamcontrol.com)**



Foam-Control MAX products are manufactured by AFM Corporation licensees.

Copyright © 2020 AFM Corporation. All rights reserved. Printed in USA. Foam-Control MAX, Foam-Control MAX logo, Perform Guard, Powered by Graphite, and Next Generation Powered by Graphite are registered trademarks of AFM Corporation, Lakeville, MN.

UL logo is a registered trademark of UL LLC. USGBC logo is a registered trademark of U.S. Green Building Council.

FCM15-01/20



[www.foam-control.com](http://www.foam-control.com)

**NEXT GENERATION  
INSULATION POWERED  
BY GRAPHITE®**